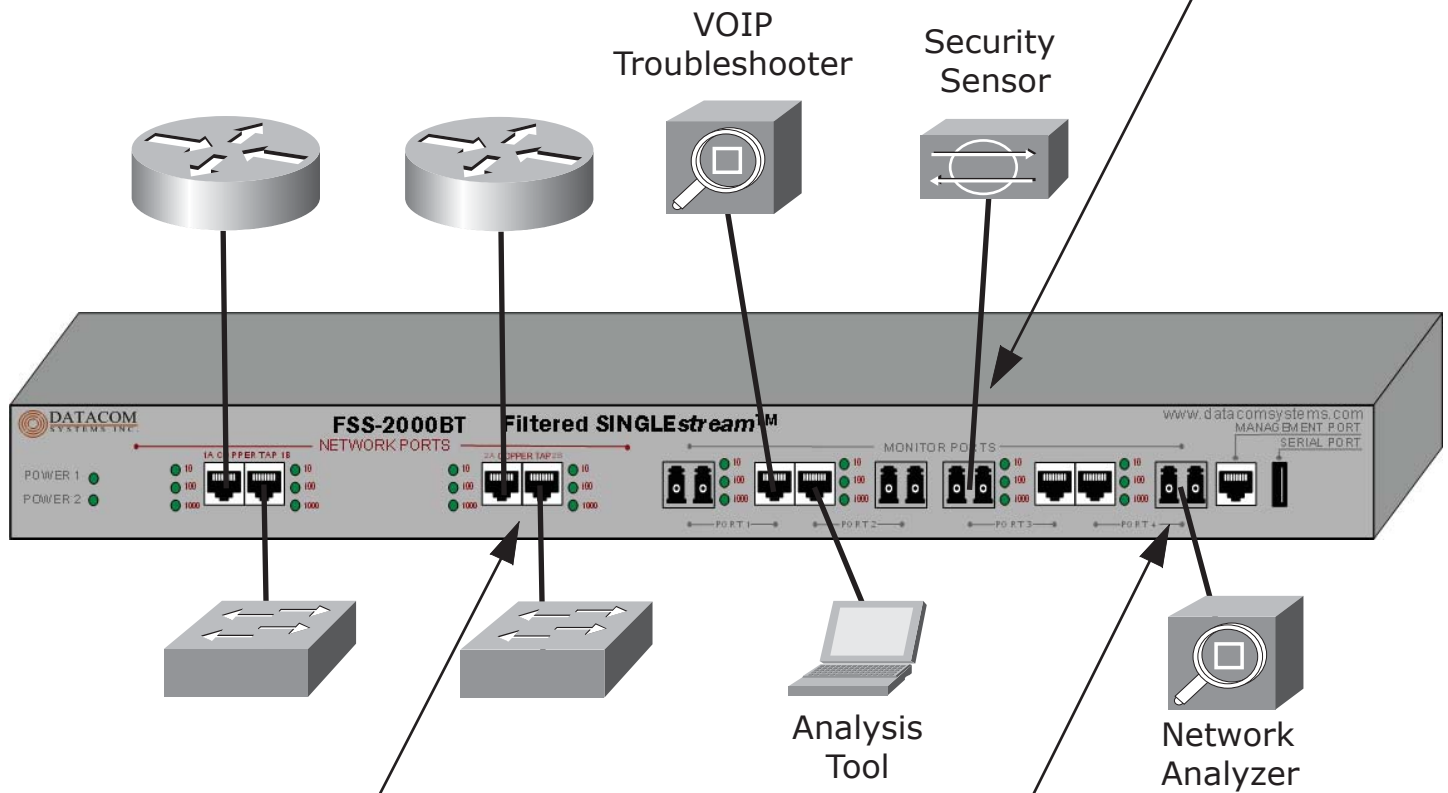


- Four Monitoring Ports available on all FSS Models
- Port steering allows a tool to watch only one network segment
- Filter on IP Address, Port, MAC Address, Frame Type or Protocol Type



Passively Tap 2 Copper Network Links

Hardware-Based, Port Filters send ONLY interesting Traffic to Tools/Sensors

Aggregate Traffic from different segments so that a single tool with a single NIC sees both networks

All FSS monitoring ports provide 10/100/1000 Mbps connectivity for either Fiber or Copper Media

Taps provide improved visibility over SPAN ports

ACCESS YOUR NETWORK™